

Online Registration on chess-results.com

Last update 10.11.2009, Author Heinz Herzog

Chesstournaments-Results-Server
powered by Swiss-Manager

GER ENG ESP POL SVK CZE

Home Tournament-Database AUT championship FAQ Online Registration Sv

General Registration Players registered Change data Payment (in) Presence Payment (out)

Welcome to the online registration

From view of the player:

The online registration offers a simple way for a player to register himself for a tournament.

The following functions are available to the player.

- **Registration**

Here the player can enter himself for the selected tournament. After selection of the tournament the registration mask is shown. The registration can occur with the help of the FIDE-ratinglist (and AUT-ratinglist).

The following data are entered:

Tournament *	Group A
First Name *	<input type="text"/>
Last Name *	<input type="text"/>
Academic Title	<input type="text"/>
Street *	<input type="text"/>
Zip Code *	<input type="text"/>
City *	<input type="text"/>
Country *	-
E-Mail *	<input type="text"/>
Date of Birth *	<input type="text"/> DD.MM.YYYY
Gender *	male
Federation *	-
Title	-
FIDE ID-Code	<input type="text"/>
National Ident-Number	<input type="text"/>
FIDE Rating	<input type="text"/>
National Rating	<input type="text"/>
National Ratinglist	-
Chess Club	<input type="text"/>

* required fields

I confirm my registration for the **vienna chess open 2009** and will remit the entry fee in the amount of 80,-- Euro to the account of the Vienna Chess Federation.

After your registration you will get a confirmation mail.

After "Submit registration" the entered data will be checked and if necessary suitable error messages are shown. If the entered data are correct, the record is saved and the player (and organizer) gets a confirmation mail.

Players registered: 541

Country Tournament

[Ranking list](#) [Alphabetical list](#)

The successful registration can be checked with "Ranking list" or "alphabetical list" immediately.

- **Players registered**

Here you see all registered players or the last upload (depends on a parameter set by the organizer) .

From view of the organizer:

The online registration offers to the organizer a **professional possibility to handle the player's registration** for his tournaments. The online registration can be used nowadays **free of charge** by the organizer. The entered data can easily be imported into Swiss manager.

The following functions are available to the organizer:

- **Change date**
Here the organizer can insert/change/delete data and download the data to an Excel-File.
- **Payment (in)**
Here the organizer can enter the payment and printout a payment confirmation (Excel or PDF-File). An Excel-File is used as Template. It can be uploaded by the organizer.
Example-Template under http://chess-results.com/download/vorlagen/template_Einzahlung.XLS
- **Presence**
Here the presence of the players can be entered before pairing the 1-st round. All data can be imported from the organizer into Swiss manager. Not present players can be taken into consideration (not paired).
- **Payment (out)**
Here the organizer can print out a confirmation on the monetary prices (Excel or PDF file). An Excel-File is used as Template. It can be uploaded by the organizer. The monetary prices can also be uploaded by the organizer.
Example-Template under http://chess-results.com/download/vorlagen/template_Auszahlung.XLS
Example-Template under http://chess-results.com/download/vorlagen/template_Preisgelder.XLS
- **Table cards**
Here the organizer can print out table cards (including flags and logos) (Excel or PDF-File) for the selected tournament. An Excel-File is used as Template. It can be uploaded by the organizer.
Example-Template under http://chess-results.com/download/vorlagen/template_Namenskarten.XLS
- **Templates**
Here the organizer can upload the Excel-Templates (Excel format 2000/2003) for the Table-Cards, Payment (in) confirmation, Payment (out) confirmation and monetary prices uploaded/downloaded to/from chess-results.com.
- **Parameter**
Here some global and tournament parameters can be entered.
- **Questionnaire**
Here the organizer can enter the data of questionnaire. The questionnaire was designed especially for the Vienna Open 2009. Only in German available.

Setup of the online registration:

Necessary preparations:

- Before the online registration on chess-results.com can be setup, the tournament data must be entered in Swiss manager (without player's data) and uploaded to chess-results.com with menu item "Internet / Automatic Upload to Chess-Results.com". If there are several groups, all groups must be entered in Swiss-Manager and uploaded to chess-results.com.
- For most functions the organizer has to login on chess-result.com, so that the functions are available. Login on chess-results.com occurs in Swiss manager with the menu item „**Internet / Login online registration on Chess-Results.com**“.

Important: The organizer can setup/administrate only his tournaments (=creator of the Swiss-Manager file).

After call from item „**Internet / Login online registration on Chess-Results.com**“.the Parameter-Dialog is shown:

General Registration Players registered Change data Payment (in) Presence Payment (out) Table cards Templates Parameter	
Parameter : vienna chess open	
Tournamentselection	Show/Change global parameters
Tournament	<input type="text"/>
Tournament (HTML)	<input type="text"/>
Confirmation German with entry fee	<input type="text"/>
Confirmation German without entry fee	<input type="text"/>
Thank you Mail German	<input type="text"/>
Confirmation English with entry fee	<input type="text"/>
Confirmation English without entry fee	<input type="text"/>
Thank you Mail English	<input type="text"/>
Mail copy to (CC)	<input type="text"/>
Official Homepage of the Organizer	<input type="text"/>
Output of the Payment in confirmation as	Excel-File
Entry fee overview	Date of Birth List
Save	

Example from Vienna Open:

General Registration Players registered Change data Payment (in) Presence Payment (out) Table cards Templates **Parameter**

Parameter : vienna chess open

Tournamentsselection

Tournament

Tournament (HTML)

Confirmation German with entry fee

Confirmation German without entry fee

Thank you Mail German

Confirmation English with entry fee

Confirmation English without entry fee

Thank you Mail English

Mail copy to (CC)

Official Homepage of the Organizer

Output of the Payment in confirmation as

[Entry fee overview](#) [Date of Birth List](#) [Save](#)

Notes

- With the field "Confirmation with entry fee" the # sign (..entry fee in the amount of #,-- Euro..) is replaced with the calculate entry fee.
- For some fields HTML-Meta tags can be used. Nowadays the following tags are possible:

{big} {/big}	The text between {big} and {/big} is shown a little bit larger.
{b} {/b}	The text between {b} and {/b} is shown bold.
{br}	New line

- „Mail copy to (CC)“: The registration data of the player are sent to this mail address as CC.
- With link "Save" the entered data are saved n the database.

After the global parameters are saved, one or more tournament groups (e.g. group A, B, C) can be connected with the online registration. In the Dropdownlist all tournaments of the organizer are shown, whose beginning is in the future.

E.g.:

Tournamentsselection

Tournament

After „Add: 16. Int. Offene Wiener Schachmeisterschaft 2009 A-Turnier“ the parameters for this tournament are shown:

Tournamentsélection		Add : 16. Int. Offene Wiener Schachmeisterschaft 2009 A-Turnier	
Tournamentgroupname German (e.g. Gruppe A)	<input type="text"/>		
Tournamentgroupname English (e.g. Group A)	<input type="text"/>		
Entry fee	<input type="text" value="0"/>		
Entry fee GM	<input type="text" value="0"/>		
Entry fee IM	<input type="text" value="0"/>		
Entry fee Women	<input type="text" value="0"/>		
Entry fee Youth	<input type="text" value="0"/>	Year of birth (yyyy) >=	<input type="text" value="0"/>
Entry fee Senior	<input type="text" value="0"/>	Year of birth (yyyy) <=	<input type="text" value="0"/>
Rating maximum	<input type="text" value="0"/>		
Data input until possibly (dd.mm.yyyy)	<input type="text"/>		
Data input until possibly (dd.mm.yyyy) spec. authorisation	<input type="text"/>		
Send Mail	<input type="text" value="No"/>		
Strict input check	<input type="text" value="No"/>		
Show Online-Data on Chess-Results.com	<input type="text" value="No"/>		
			Save

Example from Vienna Open:

Tournamentsélection		Add : 16. Int. Offene Wiener Schachmeisterschaft 2009 A-Turnier	
Tournamentgroupname German (e.g. Gruppe A)	<input type="text" value="A-Turnier"/>		
Tournamentgroupname English (e.g. Group A)	<input type="text" value="Group A"/>		
Entry fee	<input type="text" value="80"/>		
Entry fee GM	<input type="text" value="0"/>		
Entry fee IM	<input type="text" value="40"/>		
Entry fee Women	<input type="text" value="80"/>		
Entry fee Youth	<input type="text" value="40"/>	Year of birth (yyyy) >=	<input type="text" value="1991"/>
Entry fee Senior	<input type="text" value="80"/>	Year of birth (yyyy) <=	<input type="text" value="0"/>
Rating maximum	<input type="text" value="9999"/>		
Data input until possibly (dd.mm.yyyy)	<input type="text" value="15.08.2009 00:00:00"/>		
Data input until possibly (dd.mm.yyyy) spec. authorisation	<input type="text" value="23.08.2009 00:00:00"/>		
Send Mail	<input type="text" value="Yes"/>		
Strict input check	<input type="text" value="Yes"/>		
Show Online-Data on Chess-Results.com	<input type="text" value="Yes"/>		
			Save

Notes

- „Rating maximum“: If the Rating maximum is crossed (the national AND international rating is checked) a suitable message is given. The registration for this group is not possible.
- „Send Mail“: The player (and the organizer if „Mail copy to“ is defined) gets a confirmation mail about the registration.
- „Strict input check“: If "Yes", it is checked whether all necessary data are entered and the data on plausibility checked. If "No", mainly only name must be entered.
- „Show Online-Data on Chess-Results.com“:
If "Yes", the entered data are immediately shown on chess-results.com. "Yes" should be selected till the tournament starts, If "No" the last Swiss manager upload is shown. After the Upload of the pairing of the 1st round, the option "No" should be selected.

After saving the data, the B-Group **can be connected with the online registration** by clicking „Add: 16. Int. Offene Wiener Schachmeisterschaft 2009 B-Turnier“.

Before the tournament begins in the tournament hall:

- **If the player is not registered:**
The player enters his data on PCs/notebooks provided by the organizer, or fills out a suitable form, which is entered to chess-result.com by the organizer. Then further with „If the player is registered) and the entry fee is not paid“
- **If the player is registered (=saved on chess-results.com) and the entry fee is not paid:**
Menu „Payment (in)“ and select the first letter of the name of the player:

General Registration **Players registered** Change data **Payment (in)** Presence Payment (out) Table card

Payment (in) : vienna chess open

Federation selection: -
Tournamentselection: -
Special Selection: All

Please select the first character of the last name

All A B C D E F G H I J K L M N O P R S T U V W Z

With this selection 541 players were found.

Alphabetical list

No.	Group	Name	Fed	Tit	RtgI	RtgN	to pay	paid	Pays in	is present	Change	Print
1	Group A	Oltean Stefan	ROU	-	0	0	70	0			Change	
2	Group A	Ootes Lars	NED	-	2261	2295	35	35	15.07.2009	Yes	Change	Print
3	Group A	Ootes Lennart	NED	-	2082	2056	70	70	13.07.2009	Yes	Change	Print
4	Group A	Opl Klaus Dr.	AUT	FM	2350	2320	70	70	08.07.2009	Yes	Change	Print
5	Group B	Opl Klaus Mag.	AUT	-	0	1621	50	50	27.06.2009	Yes	Change	Print
6	Group A	Ordian Vrej	ARM	FM	2349	0	70	70	29.07.2009	Yes	Change	Print
7	Group A	Ozeren Kemal	ENG	-	2306	2304	70	70	15.07.2009	Yes	Change	Print

After taking the money of the entry fee, click the name (e.g., Oltean):

No.	Group	Name	Fed	Tit	RtgI	RtgN	to pay	paid	Pays in	is present	Change	Print
1	Group A	Oltean Stefan	ROU	-	0	0	70	70	10.11.2009	Yes	Change	Print

Now the payment confirmation can be printed with "Print" and be signed. The "is present" flag is set to "Yes". **The registration for this player is finished.**

If the amounts must be changed (will only be seldom necessary), this can occur through clicking of "Change":

Oltean Stefan ID: 456

to pay: 70 paid: 70 Pays in (DD.MM.YYYY): 10.11.2009 [Save](#)

- **If the player is registered and the entry fee is paid:**

Menu „Presence“ and select the first letter of the name of the player:

Please select the first character of the last name

All A B C D E F G H I J K L M N O P R S T

With this selection 541 players were found.

Alphabetical list

No.	Group	Name	Fed	Tit	RtgI	RtgN	to pay	paid	Pays in	is present
1	Group A	Oltean Stefan	ROU	-	0	0	70	70	10.11.2009	

Click afterwards the name (e.g., Oltean).

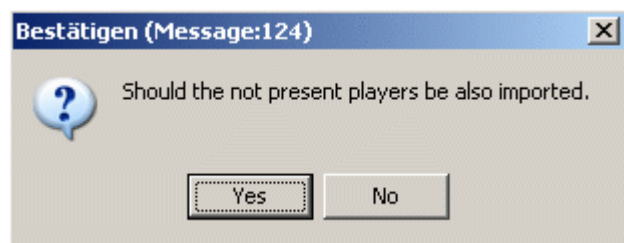
The “is present” flag is set to “Yes”.

The registration for this player is finished.

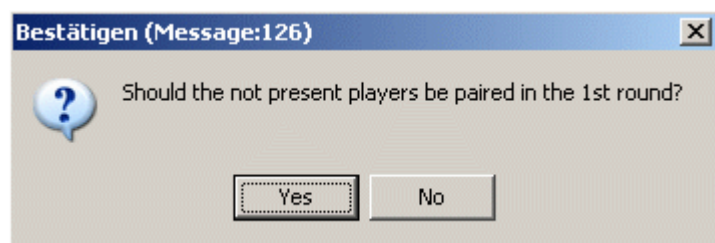
After ending of the online registration

After all players on chess-results.com are entered:

Start Swiss managers and read in the suitable tournament and click menu item „Internet / Import online registration from Chess-Results.com“. After confirmation of the „Are you sure “ question:



After clicking from "Yes" the following question appears:



Notes:

- With "No" the players are not paired in the 1st round. For all other rounds, the exclusion must be down with menu item „Pairing / Exclude player...” by hand.
- The import from Chess-Results.com can be repeated any time. Before importing all players are deleted in the Swiss manager.

Now the first round can be paired.